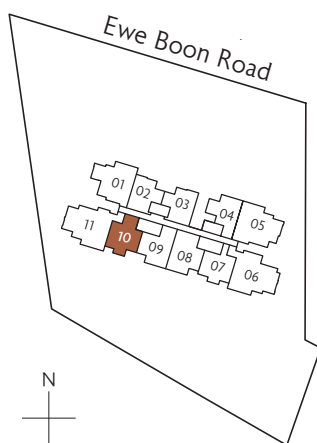
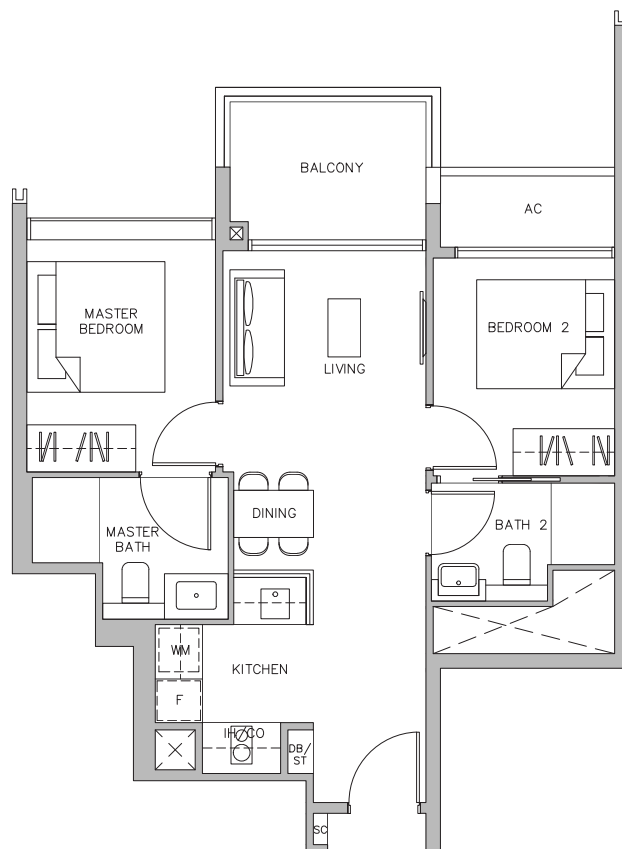


2-BEDROOM PREMIUM

TYPE B4P

61 sq m / 657 sq ft
#02-10 to #11-10



Key plan is not drawn to scale



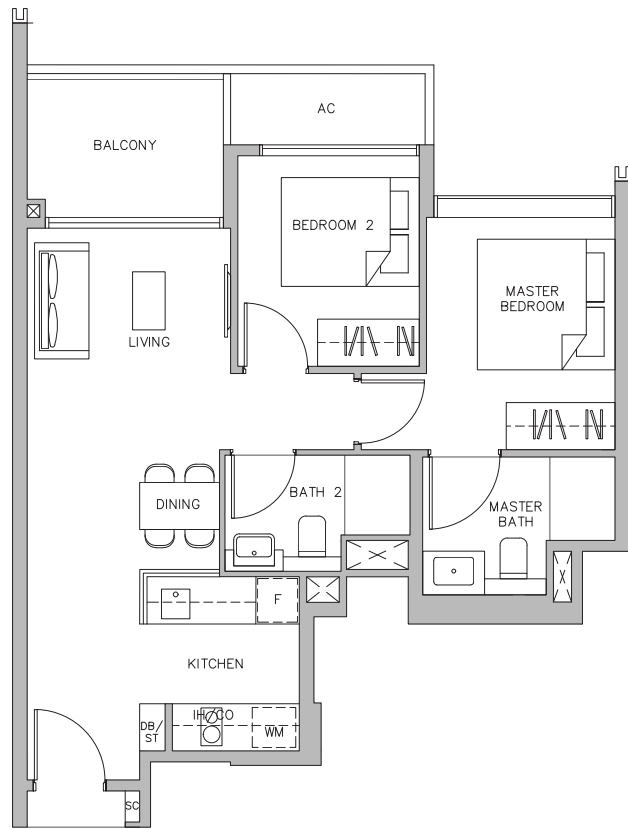
- | | | | |
|----|-------------------|----|--------------------|
| F | Fridge | SC | Shoe Cabinet |
| CO | Conventional Oven | DB | Distribution Board |
| IH | Induction Hob | ST | Storage |
| WM | Washer cum Dryer | | |

Area includes air-con (A/C) ledge. Private enclosed space (PES), balcony and strata void area where applicable. Some units are mirror images of the apartment plans shown in the brochure. Please refer to the key plan for orientation. The plans are subject to change as may be approved by relevant authorities. All floor plans are approximate measurements only and are subject to government re-survey. The balcony shall not be enclosed unless with the approved balcony screen. Please refer to the diagram annexed hereto as "Approved Balcony Screen".

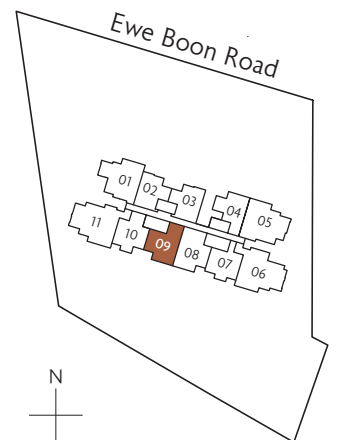
2-BEDROOM PREMIUM

TYPE B5P

65 sq m / 700 sq ft
#02-09 to #11-09



- | | | | |
|----|-------------------|----|--------------------|
| F | Fridge | SC | Shoe Cabinet |
| CO | Conventional Oven | DB | Distribution Board |
| IH | Induction Hob | ST | Storage |
| WM | Washer cum Dryer | | |



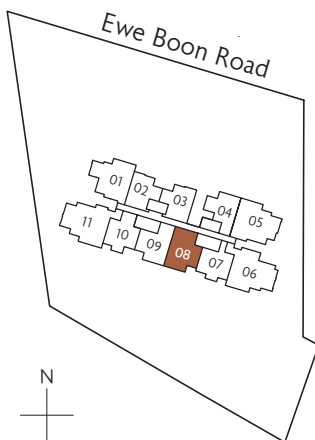
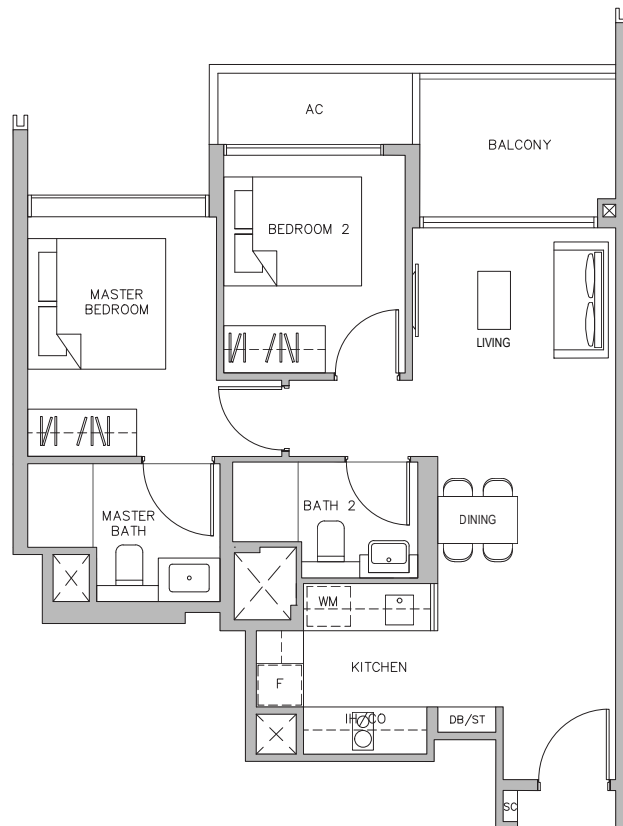
Key plan is not drawn to scale

Area includes air-con (A/C) ledge. Private enclosed space (PES), balcony and strata void area where applicable. Some units are mirror images of the apartment plans shown in the brochure. Please refer to the key plan for orientation. The plans are subject to change as may be approved by relevant authorities. All floor plans are approximate measurements only and are subject to government re-survey. The balcony shall not be enclosed unless with the approved balcony screen. Please refer to the diagram annexed hereto as "Approved Balcony Screen".

2-BEDROOM PREMIUM

TYPE B6P

67 sq m / 721 sq ft
#02-08 to #11-08



Key plan is not drawn to scale



- | | | | |
|----|-------------------|----|--------------------|
| F | Fridge | SC | Shoe Cabinet |
| CO | Conventional Oven | DB | Distribution Board |
| IH | Induction Hob | ST | Storage |
| WM | Washer cum Dryer | | |

Area includes air-con (A/C) ledge. Private enclosed space (PES), balcony and strata void area where applicable. Some units are mirror images of the apartment plans shown in the brochure. Please refer to the key plan for orientation. The plans are subject to change as may be approved by relevant authorities. All floor plans are approximate measurements only and are subject to government re-survey. The balcony shall not be enclosed unless with the approved balcony screen. Please refer to the diagram annexed hereto as "Approved Balcony Screen".