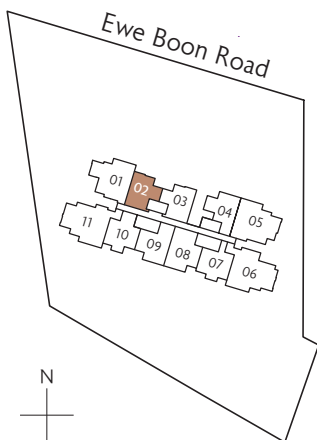
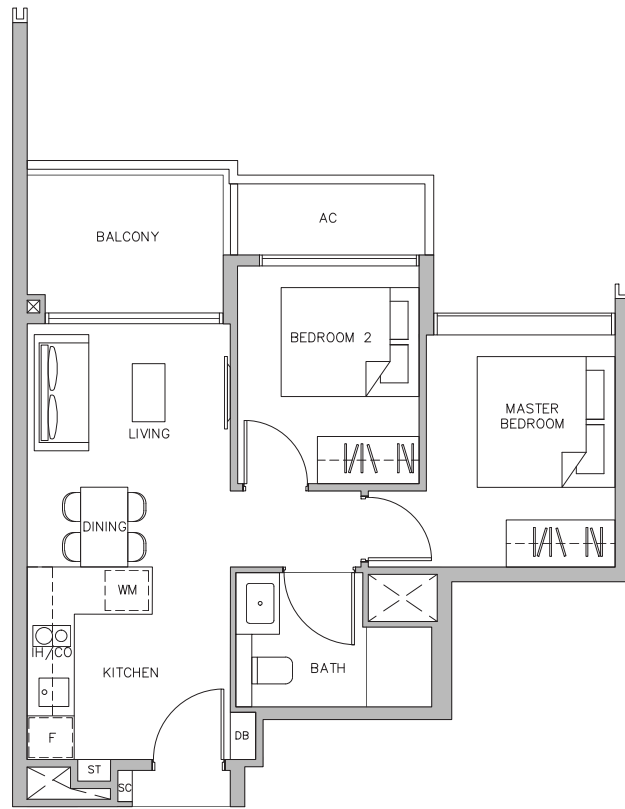


# 2-BEDROOM

## TYPE B1<sub>a</sub>

55 sq m / 592 sq ft  
#02-02 to #11-02



Key plan is not drawn to scale



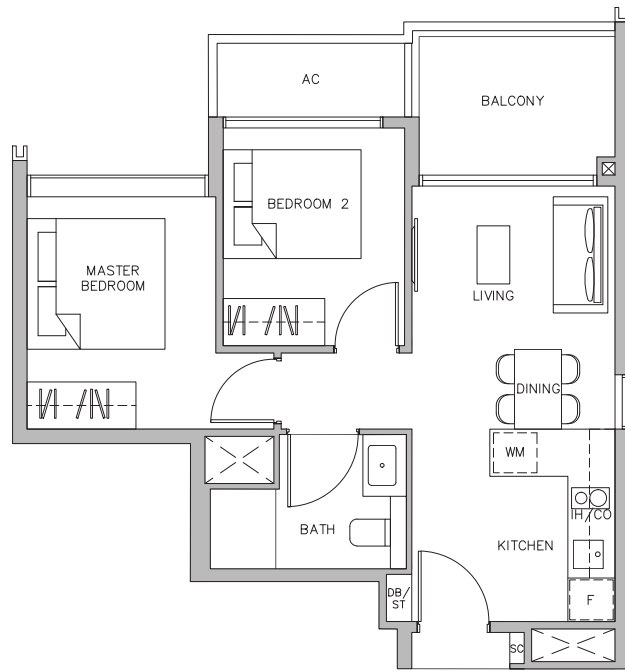
- |    |                   |    |                    |
|----|-------------------|----|--------------------|
| F  | Fridge            | SC | Shoe Cabinet       |
| CO | Conventional Oven | DB | Distribution Board |
| IH | Induction Hob     | ST | Storage            |
| WM | Washer cum Dryer  |    |                    |

Area includes air-con (A/C) ledge. Private enclosed space (PES), balcony and strata void area where applicable. Some units are mirror images of the apartment plans shown in the brochure. Please refer to the key plan for orientation. The plans are subject to change as may be approved by relevant authorities. All floor plans are approximate measurements only and are subject to government re-survey. The balcony shall not be enclosed unless with the approved balcony screen. Please refer to the diagram annexed hereto as "Approved Balcony Screen".

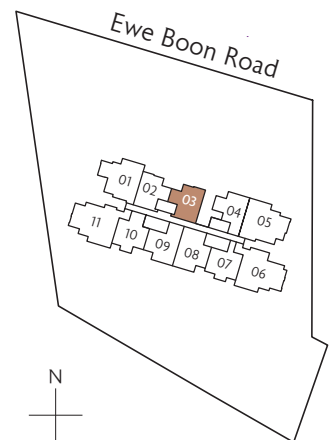
# 2-BEDROOM

## TYPE B1<sub>b</sub>

54 sq m / 581 sq ft  
#02-03 to #11-03



- |    |                   |    |                    |
|----|-------------------|----|--------------------|
| F  | Fridge            | SC | Shoe Cabinet       |
| CO | Conventional Oven | DB | Distribution Board |
| IH | Induction Hob     | ST | Storage            |
| WM | Washer cum Dryer  |    |                    |



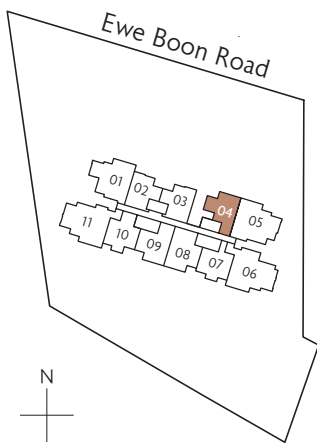
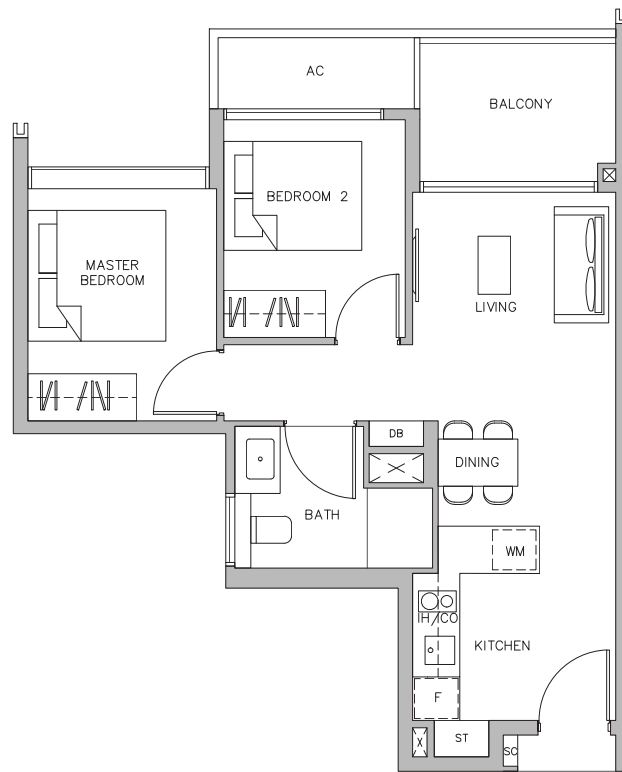
Key plan is not drawn to scale

Area includes air-con (A/C) ledge. Private enclosed space (PES), balcony and strata void area where applicable. Some units are mirror images of the apartment plans shown in the brochure. Please refer to the key plan for orientation. The plans are subject to change as may be approved by relevant authorities. All floor plans are approximate measurements only and are subject to government re-survey. The balcony shall not be enclosed unless with the approved balcony screen. Please refer to the diagram annexed hereto as "Approved Balcony Screen".

# 2-BEDROOM

## TYPE B2

59 sq m / 635 sq ft  
#02-04 to #11-04



Key plan is not drawn to scale



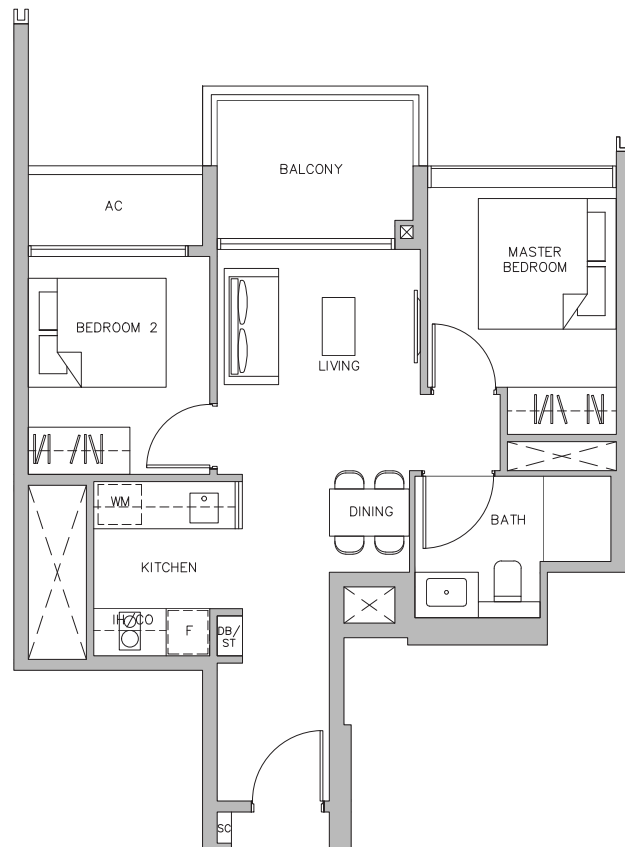
- |    |                   |    |                    |
|----|-------------------|----|--------------------|
| F  | Fridge            | SC | Shoe Cabinet       |
| CO | Conventional Oven | DB | Distribution Board |
| IH | Induction Hob     | ST | Storage            |
| WM | Washer cum Dryer  |    |                    |

Area includes air-con (A/C) ledge. Private enclosed space (PES), balcony and strata void area where applicable. Some units are mirror images of the apartment plans shown in the brochure. Please refer to the key plan for orientation. The plans are subject to change as may be approved by relevant authorities. All floor plans are approximate measurements only and are subject to government re-survey. The balcony shall not be enclosed unless with the approved balcony screen. Please refer to the diagram annexed hereto as "Approved Balcony Screen".

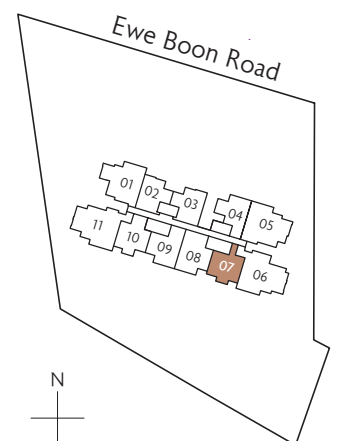
# 2-BEDROOM

## TYPE B3

58 sq m / 624 sq ft  
#02-07 to #11-07



- |    |                   |    |                    |
|----|-------------------|----|--------------------|
| F  | Fridge            | SC | Shoe Cabinet       |
| CO | Conventional Oven | DB | Distribution Board |
| IH | Induction Hob     | ST | Storage            |
| WM | Washer cum Dryer  |    |                    |



Key plan is not drawn to scale

Area includes air-con (A/C) ledge. Private enclosed space (PES), balcony and strata void area where applicable. Some units are mirror images of the apartment plans shown in the brochure. Please refer to the key plan for orientation. The plans are subject to change as may be approved by relevant authorities. All floor plans are approximate measurements only and are subject to government re-survey. The balcony shall not be enclosed unless with the approved balcony screen. Please refer to the diagram annexed hereto as "Approved Balcony Screen".